

AGENDA

COMMITTEE OF THE WHOLE

November 10, 2025 - 6:00 PM
Village Hall - Board Room
300 Plaza Circle, Mundelein, IL 60060

I. CALL TO ORDER

II. ATTENDANCE

III. MINUTES APPROVAL

A. Committee of the Whole Meeting Minute Approval

Motion to approve the Committee of the Whole minutes from October 27, 2025.

IV. PUBLIC COMMENTARY

V. NEW BUSINESS

A. 2025 Property Tax Levy Discussion

Staff recommends Option 2A to allow for sufficient contributions to the Public Safety Pensions. This option also includes no increase for the Corporate amount. In order to provide for adequate funds to cover the inflationary increases and growth in the Village for wages, services, and supplies necessary to deliver the level of service expected of our residents, an Alternative Revenue stream from a Grocery tax is recommended rather than increase property taxes for Corporate (General Fund) use.

VI. ADJOURNMENT

A. Adjourn the Committee of the Whole Meeting

Motion to adjourn the Committee of the Whole Meeting.

The Village of Mundelein, in compliance with the Americans with Disabilities Act, requests that persons with disabilities who require certain accommodations to allow them to observe and/or participate in this meeting, or who have questions about the accessibility of the meeting or facilities, to contact the ADA Coordinator at 847-949-3200 to allow the Village to arrange accommodations for those persons.

CALL TO ORDER

Clerk Walsh took the roll call. It indicated as follows:

Board Attendance

PRESENT: Trustees Grieco, Juarez, Krinski, Lambert, Schwenk, Ugaste, Mayor Meier

ABSENT: None

Village Attendance

PRESENT: Attorney Cahill, Village Administrator Guenther, Assistant Village Administrator Monroe, Finance Director Miller, Fire Chief Lark, Police Chief Seeley, Building Department Director Sellas, Community Development Director Orenchuk

ABSENT: Public Works and Engineering Director Boeche

MINUTES APPROVAL

MINUTES APPROVAL

RESULT:	Passed [Yes 6, No 0, Abstained 0]
MOVER:	Trustee Juarez
SECONDER:	Trustee Ugaste
AYES:	Trustee Grieco, Trustee Juarez, Trustee Krinski, Trustee Lambert, Trustee Schwenk, Trustee Ugaste
NAYS:	None
ABSTAIN:	None

PUBLIC COMMENTARY

None

NEW BUSINESS

NEW BUSINESS

Free Speech Zone

Administrator Guenther made a presentation on the Free Speech Zone issue. This has come up several times over the years, the first time in 1987. We are addressing this issue again due to residents asking about religious displays during the holiday season, specifically Menorahs and crèches. The Board was asked if they wanted to create a Free Speech Zone policy.

In 1987 a court case was brought against the Village's crèche stating the Village could not display the crèche as it was a religious symbol. The courts went back and forth for years

on this topic. In 2017 a court case involving O'Hare Airport and their displays of holiday religious symbols being on a "public forum". Based on a resident's request to consider something similar in the Village, the Village attorney at the time created a memo regarding this. Since the grassy area just outside the Village Hall had not been designated as a "public forum", the request for religious symbols was denied. The Village has not created a Village property as a "public forum" due to it being an "all or nothing" scenario (Mr. Guenther referenced a situation where Girl Scouts were selling cookies on municipal property and members of the Ku Klux Klan demanded to use the same space for their display). They were denied and the court case that followed had the municipality losing.

In 2017, a survey was sent out to the residents. 55% of those responding did not want religious displays on public land, 72% did not want tax dollars spent on the purchase and maintenance of religious displays.

In 2022, an ordinance was enacted stating Village approval is needed before any displays on Village property, flag poles, etc.

Do we want a Free Speech Zone? This can be anything not deemed obscene by the Village. We already have an assembly policy and this would not interfere with that. Trustee Schwenk asked what this policy would *not* be—i.e., the example he gave was protests. Mr. Guenther said that would not be interfered with. Trustee Juarez asked if this space would have to be accessible to parking—the answer was yes, it would have to be. A possible location for this space was shown, and it was the green space at Courtland and Hawthorne, which has available parking along Hawthorne. Mr. Juarez wanted to know if the regular maintenance of the property would still be handled by the Village (yes it would be). Trustee Lambert pointed out that this would not all be cost-free and that this project appears to be more of a "want" than a "need". Trustee Krinski spoke about what could Village could ban—could we ban the swastika (which is viewed as a hate symbol)? Attorney Cahill said that is where things get complicated; Trustee Ugaste doesn't like the idea of having staff have to make these kinds of decisions—what is OK and what isn't. Trustee Grieco said there is enough controversy in the world, and she would not want to have to see whatever signs or displays might be placed at this grassy spot (she used to live in this area), also having kids have to walk by it daily would not be her choice. Trustee Schwenk is worried about the slippery slope that this could become; putting more work on staff with permits and researching what is OK and what is not.

Mayor Meier took a straw poll and the result was no to the issue.

NEW BUSINESS

ATM with Video Gaming

Administrator Guenther discussed this topic which has come up numerous times over the years.

In 2012 the Board approved gaming machines in certain establishments with the Village. At the same time they banned ATMs in those establishments. There is an addictiveness associated with gambling; problem drinkers are 23 times more likely to have a gambling problem than others. Numerous studies point to an increase in crimes as a result to gambling including domestic battery, DUI, fraud, and robbery.

Mr. Guenther went over the pros and cons, and the establishments seem to want the ATMs.

Trustee Juarez was a flat no and ATMs are generally walkable to the places with the gaming machines. Trustee Krinski said he has known gamblers (and they are always waiting for the big payoff). He is against the machines. Trustee Ugaste feels the Village doesn't "need" this and we are not the morality police though many businesses are in support of this. Trustee Schwenk doesn't want to legislate morality but we don't have to make it easier. In looking at the slide showing the responses various businesses gave for adding ATMs, it appeared to be primarily to support their business off of gaming.

There were 4 no's from the Board.

ADJOURNMENT

Committee of the Whole Meeting adjourned at 6:42 PM.

To: Mayor and Board of Trustees
From: Linda Miller, Finance Director
For: Committee of the Whole of November 10, 2025
Subject: 2025 Property Tax Levy Discussion

Financial Impact:

Finance Department

Committee Report

Attachments:

1. 2025 Property Tax Levy Presentation

Background:

Property Tax Levy

Property taxes are the largest revenue source for the Village; last year the Village levied \$16.8 million for various government functions.

Our 2024 property tax levy rate was 1.37. Our EAV is expected to increase in 2025 by approximately 9.6%.

Each year an independent actuary determines the annual funding needed for our fire & police pension trust funds to achieve 90% funding by 2040, required per current State law. This year's report indicates a \$174K increase for the fire plan and a \$322K increase for the police plan for the State required amount from the prior year valuation. Current funding levels are 67% for fire and 58% for police.

The table on page 10 of the PowerPoint document illustrates our last ten property tax levies/rates, along with several options to consider for the upcoming property tax levy that must be adopted by December.

Option 1A — No change to the corporate levy of \$7.436 million, decrease the IMRF levy to \$600K and the Social Security levy to \$1.1 million, and fund the fire pension at \$180K and the police pension

at \$360K more than the 2025 statutory minimum.

Option 2A – No change to the corporate levy of \$7.436 million, decrease the IMRF levy to \$600K and the Social Security levy to \$1.1 million, and fund the fire pension and the police pension at the actuary recommended amount.

Option 1B – Increase the corporate levy to \$7.704 million, decrease the IMRF levy to \$600K and the Social Security levy to \$1.1 million, and fund the fire pension at \$180K and the police pension at \$360K more than the 2025 statutory minimum.

Option 2B – Increase the corporate levy to \$7.704 million, decrease the IMRF levy to \$600K and the Social Security levy to \$1.1 million, and fund the fire pension and the police pension at the actuary recommended amount.

Option 3B – Increase the corporate levy to \$7.957 million, decrease the IMRF levy to \$600K and the Social Security levy to \$1.1 million, and fund the fire pension at \$180K and the police pension at \$360K more than the 2025 statutory minimum.

Option 4B – Increase the corporate levy to \$8.551 million, decrease the IMRF levy to \$600K and the Social Security levy to \$1.1 million, and fund the fire pension at \$180K and the police pension at \$360K more than the 2025 statutory minimum.

All these options will decrease the tax rate from the 2024 levy rate of 1.37.

For a home valued at \$300,000, the approximate property tax paid to the Village for the 2024 Tax Levy was \$1,368.

The change to the homeowner's tax bill for the Village of Mundelein for each option is as follows:

Option 1A: Increase tax by \$2 with a tax rate of 1.25.

Option 2A: Increase tax by \$45 with a tax rate of 1.29.

Option 1B: Increase tax by \$24 with a tax rate of 1.27.

Option 2B: Increase tax by \$67 with a tax rate of 1.31.

Option 3B: Increase tax by \$45 with a tax rate of 1.29.

Option 4B: Increase tax by \$93 with a tax rate of 1.33.

The property tax levy ordinances will be on the December 08, 2025, Village Board agenda to be adopted.

Recommendation:

Staff recommends Option 2A to allow for sufficient contributions to the Public Safety Pensions. This option also includes no increase for the Corporate amount. In order to provide for adequate funds to cover the inflationary increases and growth in the Village for wages, services, and supplies necessary to deliver the level of service expected of our residents, an Alternative Revenue stream from a Grocery tax is recommended rather than increase property taxes for Corporate (General Fund) use.

PROPERTY TAX LEVY DISCUSSION

NOVEMBER 10, 2025



PROPERTY TAXES

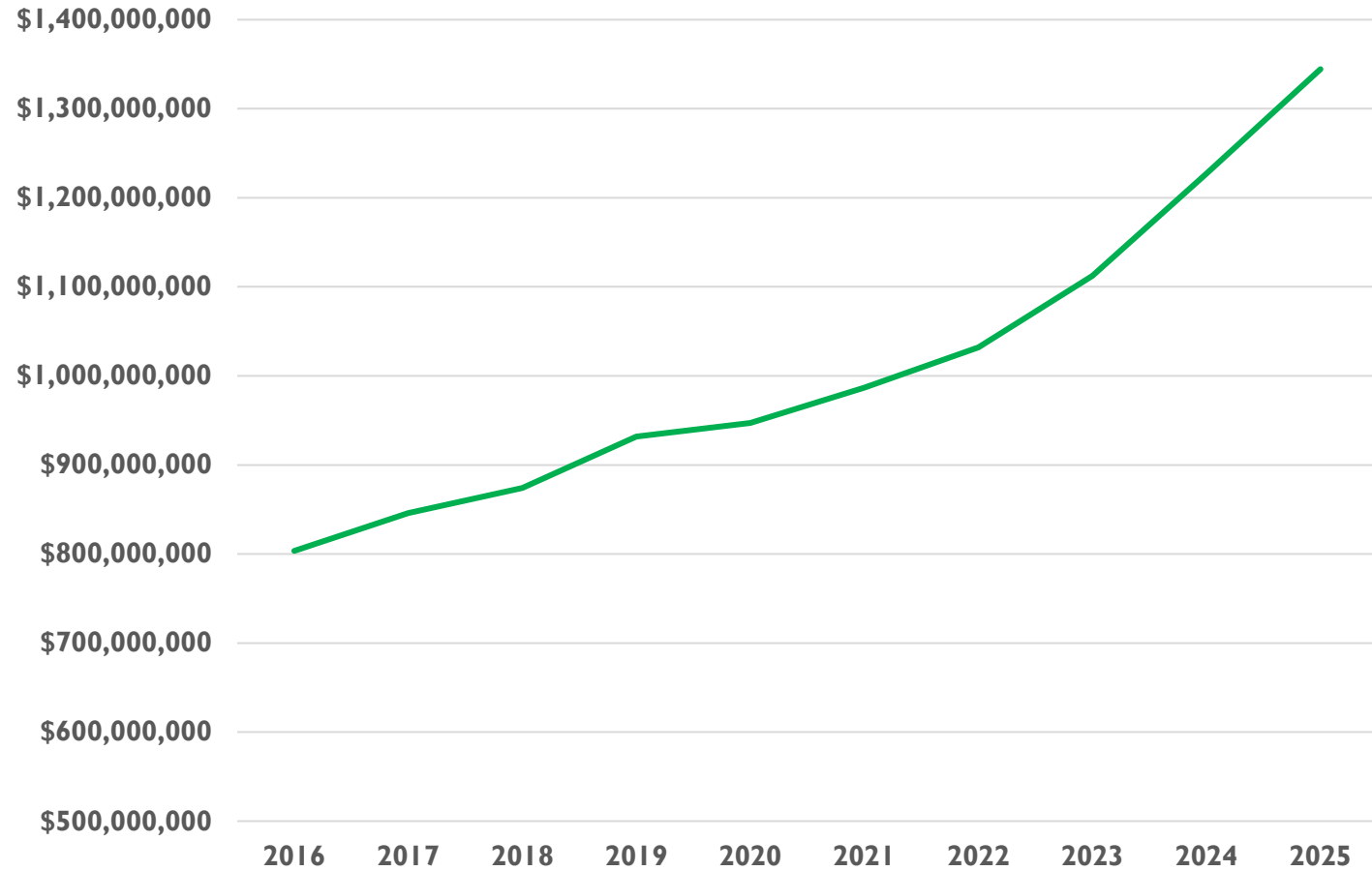
- Property Tax Levy needs to be adopted by December each year.
- An estimate of the Tax Levy is on the Board agenda this evening because at least 20 day notice of the property tax levy estimate is needed prior to adoption, per State statute.
 - 11/10/25 – Discussion and Levy Estimate
 - 12/08/25 – Tax Levy Adoption



**EQUALIZED
ASSESSED
VALUE**

- Equalized Assessed Value (EAV) is the property value assessed by the Township assessor at 1/3 its market value multiplied by a state applied equalization factor currently at 100% for Lake county.
- How does EAV affect your property tax bill? Factors affecting property tax include fluctuations in EAV and taxing bodies' \$ requests.
- Tax Bill = +/- EAV & +/- \$\$\$ requested.

PROPERTY EQUALIZED ASSESSED VALUE (EAV)

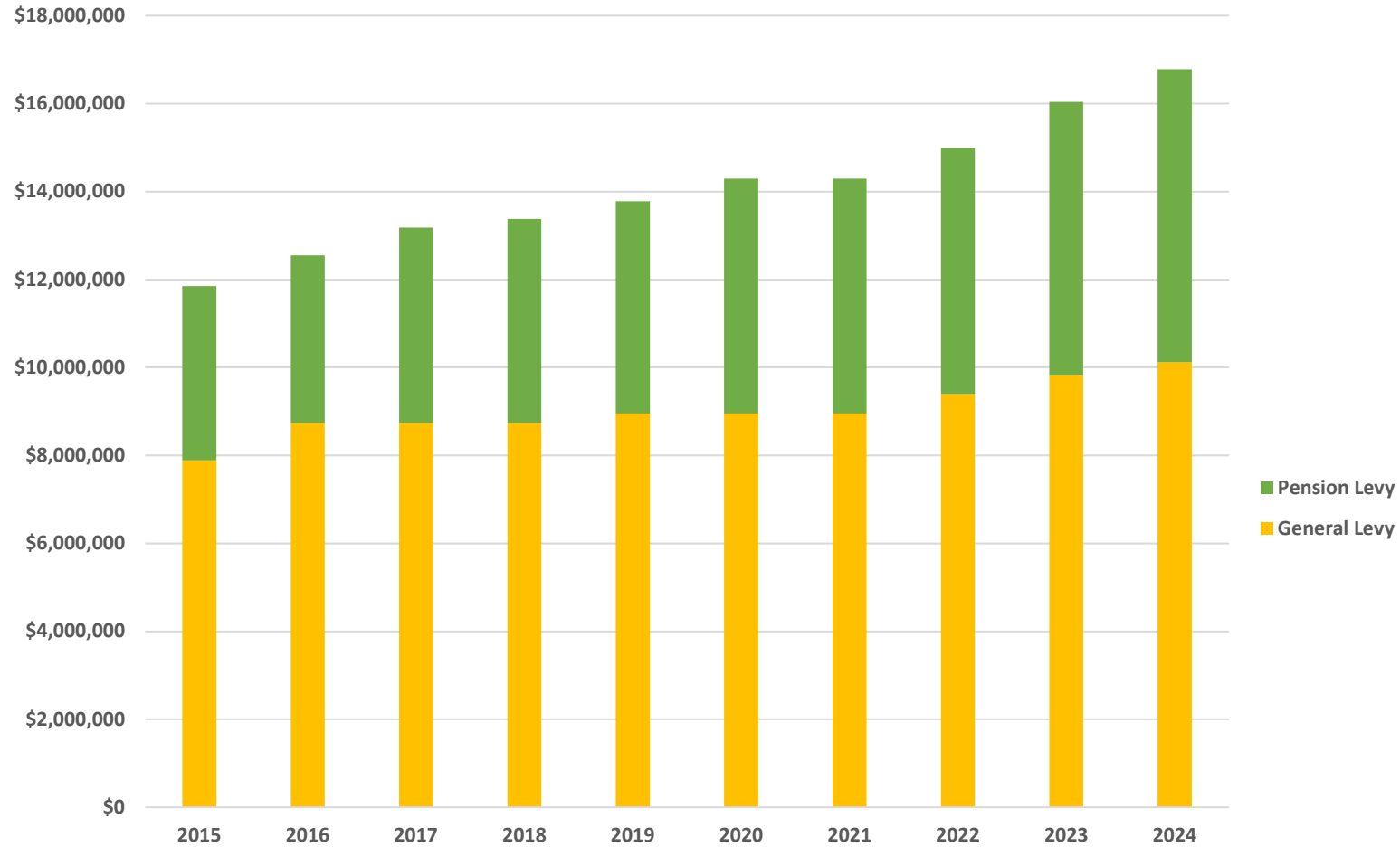




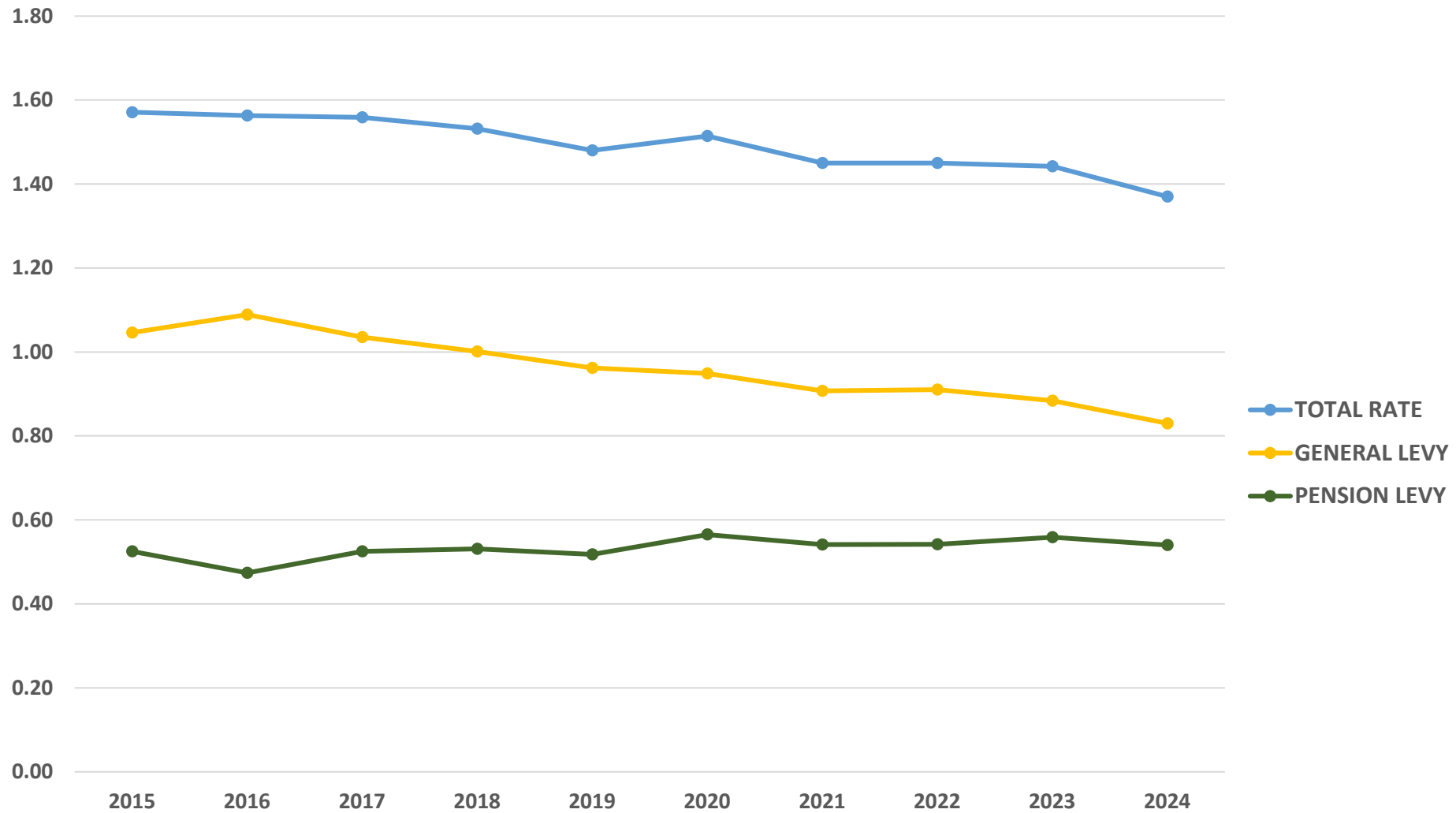
**POLICE AND
FIRE PENSIONS**

- Completely funded by tax levy.
- Independent actuary completes an annual valuation to determine our funding requirement to meet 90% funded by 2040.
- The minimum state required contribution will result in Police 58% funded, and Fire 67% funded.

TAX LEVY COMPONENTS



TAX RATES - HISTORICAL



TOP FACTORS IMPACTING VILLAGE GENERAL OPERATIONS

- Labor Costs continue to increase due to labor contract commitments and salary costs to retain and attract talented staff. Wage and Salary Increases of approximately 11.0% (\$1.9M) estimated for FY27 Budget.
- Health insurance premiums also increased 18% (\$536K) for FY27 Budget.
- Interest and Investment Earnings continue to decrease as interest rates decline.
A decline of \$200,000 is estimated for the FY27 budget.
- Supplies and Service costs are impacted by inflation and new tariffs.
The Consumer Price Index for this area reports inflation was at 3.6% for Mid Year 2025 compared to 4.1% for September 2024.
- Additional funding for Equipment Replacement fund in anticipation of Fire Ladder Truck (\$1.7M) delivery in FY28.
- Loss of Grocery Tax estimated at \$1.2M.

ALTERNATIVE REVENUE SOURCES

Alternative Revenue Sources

<u>Revenue Type</u>	<u>Estimated Annual Revenue</u>
Grocery Tax	\$ 1,200,000
Food & Beverage Tax	\$ 800,000
Home Rule Increase .25%	\$ 800,000
Real Estate Transfer Tax	\$ 525,000
Plastic Bag Tax	\$ 100,000
Streaming Tax	\$ 85,000

VILLAGE OF MUNDELEIN HISTORICAL TAX LEVY AND 2025 PROPOSED OPTIONS

	EAV	EAV Change	EAV % Change	Tax Rate	% Increase in Levy	Total Levy	Corporate	Bonds	Road & Bridge	Police Pension	Fire Pension	IMRF	Social Security					
2015 -2024 Historical Tax Levies																		
2015	754,877,076	20,856,942	2.8%	1.57	0.0%	11,850,206	5,848,001	975,000	1,064,000	1,701,682	661,523	700,000	900,000					
2016	803,467,616	48,590,540	6.4%	1.56	5.9%	12,550,000	6,267,964	975,000	1,500,000	1,438,964	618,072	750,000	1,000,000					
2017	846,067,676	42,600,060	5.3%	1.56	5.0%	13,179,151	6,267,964	975,000	1,500,000	1,824,647	786,540	755,000	1,070,000					
2018	874,027,373	27,959,697	3.3%	1.53	1.5%	13,381,048	6,267,964	975,000	1,500,000	1,941,213	896,871	700,000	1,100,000					
2019	931,954,514	57,927,141	6.6%	1.48	3.0%	13,782,479	6,267,964	975,000	1,711,312	2,038,532	939,671	725,000	1,125,000					
2020	946,981,890	15,027,376	1.6%	1.51	3.7%	14,293,654	6,267,964	975,000	1,711,312	2,381,996	1,107,382	725,000	1,125,000					
2021	986,898,889	39,916,999	4.2%	1.45	0.0%	14,293,654	6,267,964	975,000	1,711,312	2,456,776	1,007,602	725,000	1,150,000					
2022	1,032,159,798	45,260,909	4.6%	1.45	4.9%	14,990,166	6,706,721	975,000	1,711,312	2,659,326	1,037,807	725,000	1,175,000					
2023	1,112,289,363	80,129,565	7.8%	1.44	7.0%	16,042,170	7,142,658	975,000	1,711,312	2,886,387	1,151,813	775,000	1,400,000					
2024	1,227,066,072	114,776,709	10.3%	1.37	4.6%	16,787,021	7,436,000	975,000	1,711,312	3,234,365	1,255,344	775,000	1,400,000					
														Impact to \$300,000 Homeowner Tax Bill			Levy \$ Increase	Corporate \$ Increase
Proposed 2025 Tax Levy Options - No Change to Corporate Levy																		
Option 1A: 2025 - Corp 0%; Alt Police +360K, Fire +180K	1,344,425,461	117,359,389	9.6%	1.25	0.1%	16,808,081	7,436,000	975,000	1,711,312	3,556,009	1,429,760	600,000	1,100,000	\$ 2.00	21,060	-		
Option 2A: 2025 - Corp 0%; Recommended Pension	1,344,425,461	117,359,389	9.6%	1.29	3.2%	17,323,929	7,436,000	975,000	1,711,312	3,779,209	1,722,408	600,000	1,100,000	\$ 45.00	536,908	-		

VILLAGE OF MUNDELEIN

2025 PROPOSED TAX LEVY OPTION 1A

OPTION 1A															Impact to \$300,000 Homeowner		Corporate \$ Increase
	EAV	EAV Change	EAV % Change	Tax Rate	% Increase in Levy	Total Levy	Corporate	Bonds	Road & Bridge	Police Pension	Fire Pension	IMRF	Social Security	Tax Bill	Levy \$ Increase		
Tax 2024	1,227,066,072	114,776,709	10.3%	1.37	4.6%	16,787,021	7,436,000	975,000	1,711,312	3,234,365	1,255,344	775,000	1,400,000				
PROPOSED 2025 TAX LEVY OPTION 1A	1,344,425,461	117,359,389	9.6%	1.25	0.1%	16,808,081	7,436,000	975,000	1,711,312	3,556,009	1,429,760	600,000	1,100,000	\$ 2.00	\$ 21,060	\$0	
OPTION 1 TAX LEVY INCLUDES:																	
	Corporate Increase of 0%																
	Police and Fire Pension Contributions at State Minimum Required plus additional \$360,000 to Police and \$180,000 to Fire																
	IMRF Decreased \$175,000																
	Social Security Decreased \$300,000																
	Increase Levy Amount \$21K (Corporate \$0, Police Pension \$322K, Fire Pension \$174K, IMRF \$(175)K, and Social Security \$(300)K from Tax Year 2024 and Lowers Rate to 1.25 from 2024 Rate of 1.37.																
Tax -Rate Village of Mundelein				0.753													
Tax -Rate Mundelein - All Pensions				0.497													
Total Tax Rate				1.25													
% for Pensions				39.8%													
% for Police/Fire Pensions				29.7%													

VILLAGE OF MUNDELEIN

2025 PROPOSED TAX LEVY OPTION 2A

OPTION 2A															Impact to \$300,000 Homeowner		Corporate \$ Increase
	EAV	EAV Change	EAV % Change	Tax Rate	% Increase in Levy	Total Levy	Corporate	Bonds	Road & Bridge	Police Pension	Fire Pension	IMRF	Social Security	Tax Bill	Levy \$ Increase		
Tax 2024	1,227,066,072	114,776,709	10.3%	1.37	4.6%	16,787,021	7,436,000	975,000	1,711,312	3,234,365	1,255,344	775,000	1,400,000				
PROPOSED 2025 TAX LEVY OPTION 2A	1,344,425,461	117,359,389	9.6%	1.29	3.2%	17,323,929	7,436,000	975,000	1,711,312	3,779,209	1,722,408	600,000	1,100,000	\$ 45.00	\$ 536,908	\$0	
OPTION 1 TAX LEVY INCLUDES:																	
	Corporate Increase of 0%																
	Police and Fire Pension Contributions at Actuary Recommended Amount																
	IMRF Decreased \$175,000																
	Social Security Decreased \$300,000																
	Increase Levy Amount \$537K (Corporate \$0, Police Pension \$545K, Fire Pension \$467K, IMRF \$(175)K, and Social Security \$(300)K from Tax Year 2024 and Lowers Rate to 1.29 from 2024 Rate of 1.37.																
Tax -Rate Village of Mundelein				0.753													
Tax -Rate Mundelein - All Pensions				0.536													
Total Tax Rate	DECREASE ----->			1.29													
% for Pensions				41.6%													
% for Police/Fire Pensions				31.8%													

VILLAGE OF MUNDELEIN HISTORICAL TAX LEVY AND 2025 PROPOSED OPTIONS

	EAV	EAV Change	EAV % Change	Tax Rate	% Increase in Levy	Total Levy	Corporate	Bonds	Road & Bridge	Police Pension	Fire Pension	IMRF	Social Security	Impact to \$300,000 Homeowner Tax Bill	Levy \$ Increase	Corporate \$ Increase	
2015 -2024 Historical Tax Levies																	
2015	754,877,076	20,856,942	2.8%	1.57	0.0%	11,850,206	5,848,001	975,000	1,064,000	1,701,682	661,523	700,000	900,000				
2016	803,467,616	48,590,540	6.4%	1.56	5.9%	12,550,000	6,267,964	975,000	1,500,000	1,438,964	618,072	750,000	1,000,000				
2017	846,067,676	42,600,060	5.3%	1.56	5.0%	13,179,151	6,267,964	975,000	1,500,000	1,824,647	786,540	755,000	1,070,000				
2018	874,027,373	27,959,697	3.3%	1.53	1.5%	13,381,048	6,267,964	975,000	1,500,000	1,941,213	896,871	700,000	1,100,000				
2019	931,954,514	57,927,141	6.6%	1.48	3.0%	13,782,479	6,267,964	975,000	1,711,312	2,038,532	939,671	725,000	1,125,000				
2020	946,981,890	15,027,376	1.6%	1.51	3.7%	14,293,654	6,267,964	975,000	1,711,312	2,381,996	1,107,382	725,000	1,125,000				
2021	986,898,889	39,916,999	4.2%	1.45	0.0%	14,293,654	6,267,964	975,000	1,711,312	2,456,776	1,007,602	725,000	1,150,000				
2022	1,032,159,798	45,260,909	4.6%	1.45	4.9%	14,990,166	6,706,721	975,000	1,711,312	2,659,326	1,037,807	725,000	1,175,000				
2023	1,112,289,363	80,129,565	7.8%	1.44	7.0%	16,042,170	7,142,658	975,000	1,711,312	2,886,387	1,151,813	775,000	1,400,000				
2024	1,227,066,072	114,776,709	10.3%	1.37	4.6%	16,787,021	7,436,000	975,000	1,711,312	3,234,365	1,255,344	775,000	1,400,000				
														Impact to \$300,000 Homeowner Tax Bill		Corporate \$ Increase	
Proposed 2025 Tax Levy Options - Increase to Corporate Levy																	
Option 1B: 2025 - Corp 3.6%; Alt Police +360K, Fire +180K	1,344,425,461	117,359,389	9.6%	1.27	1.7%	17,076,081	7,704,000	975,000	1,711,312	3,556,009	1,429,760	600,000	1,100,000	\$ 24.00	289,060	268,000	
Option 2B: 2025 - Corp 3.6%; Recommended Pension	1,344,425,461	117,359,389	9.6%	1.31	4.8%	17,591,929	7,704,000	975,000	1,711,312	3,779,209	1,722,408	600,000	1,100,000	\$ 67.00	804,908	268,000	
Option 3B: 2025 - Corp 7.0%; Alt Police +360K, Fire +180K	1,344,425,461	117,359,389	9.6%	1.29	3.2%	17,329,081	7,957,000	975,000	1,711,312	3,556,009	1,429,760	600,000	1,100,000	\$ 45.00	542,060	521,000	
Option 4B: 2025 - Corp 15.0%; Alt Police +360K, Fire +180K	1,344,425,461	117,359,389	9.6%	1.33	6.8%	17,923,081	8,551,000	975,000	1,711,312	3,556,009	1,429,760	600,000	1,100,000	\$ 93.00	1,136,060	1,115,000	

VILLAGE OF MUNDELEIN

2025 PROPOSED TAX LEVY OPTION 1B

OPTION 1B															Impact to \$300,000 Homeowner		Corporate \$
	EAV	EAV Change	EAV % Change	Tax Rate	% Increase in Levy	Total Levy	Corporate	Bonds	Road & Bridge	Police Pension	Fire Pension	IMRF	Social Security	Tax Bill	Levy \$ Increase	Increase	
Tax 2024	1,227,066,072	114,776,709	10.3%	1.37	4.6%	16,787,021	7,436,000	975,000	1,711,312	3,234,365	1,255,344	775,000	1,400,000				
PROPOSED 2025 TAX LEVY OPTION 1B	1,344,425,461	117,359,389	9.6%	1.27	1.7%	17,076,081	7,704,000	975,000	1,711,312	3,556,009	1,429,760	600,000	1,100,000	\$ 24.00	\$ 289,060	\$ 268,000	
OPTION 1B TAX LEVY INCLUDES:																	
Corporate Increase of 3.6%, 268K																	
Police and Fire Pension Contributions at State Minimum Required plus additional \$360,000 to Police and \$180,000 to Fire																	
IMRF Decreased \$175,000																	
Social Security Decreased \$300,000																	
Increase Levy Amount \$289K (Corporate \$268K, Police Pension \$322K, Fire Pension \$174K, IMRF \$(175)K, and Social Security \$(300)K from Tax Year 2024 and Lowers Rate to 1.27 from 2024 Rate of 1.37.																	
Tax -Rate Village of Mundelein				0.773													
Tax -Rate Mundelein - All Pensions				0.497													
Total Tax Rate			DECREASE ----->	1.27													
% for Pensions				39.2%													
% for Police/Fire Pensions				29.2%													

VILLAGE OF MUNDELEIN

2025 PROPOSED TAX LEVY OPTION 2B

OPTION 2B															Impact to \$300,000 Homeowner		Corporate \$
	EAV	EAV Change	EAV % Change	Tax Rate	% Increase in Levy	Total Levy	Corporate	Bonds	Road & Bridge	Police Pension	Fire Pension	IMRF	Social Security	Tax Bill	Levy \$ Increase	Increase	
Tax 2024	1,227,066,072	114,776,709	10.3%	1.37	4.6%	16,787,021	7,436,000	975,000	1,711,312	3,234,365	1,255,344	775,000	1,400,000				
PROPOSED 2025 TAX LEVY OPTION 2B	1,344,425,461	117,359,389	9.6%	1.31	4.8%	17,591,929	7,704,000	975,000	1,711,312	3,779,209	1,722,408	600,000	1,100,000	\$ 67.00	\$ 804,908	\$ 268,000	
OPTION 2B TAX LEVY INCLUDES:																	
	Corporate Increase of 3.6%, 268K																
	Police and Fire Pension Contributions at Actuary Recommended Amount																
	IMRF Decreased \$175,000																
	Social Security Decreased \$300,000																
	Increase Levy Amount \$805K (Corporate \$268K, Police Pension \$545K, Fire Pension \$467K, IMRF \$(175)K, and Social Security \$(300)K from Tax Year 2024 and Lowers Rate to 1.31 from 2024 Rate of 1.37.																
Tax -Rate Village of Mundelein				0.773													
Tax -Rate Mundelein - All Pensions				0.536													
Total Tax Rate			DECREASE ----->	1.31													
% for Pensions				40.9%													
% for Police/Fire Pensions				31.3%													

VILLAGE OF MUNDELEIN

2025 PROPOSED TAX LEVY OPTION 3B

OPTION 3B															Impact to \$300,000 Homeowner		Corporate \$
	EAV	EAV Change	EAV % Change	Tax Rate	% Increase in Levy	Total Levy	Corporate	Bonds	Road & Bridge	Police Pension	Fire Pension	IMRF	Social Security	Tax Bill	Levy \$ Increase	Increase	
Tax 2024	1,227,066,072	114,776,709	10.3%	1.37	4.6%	16,787,021	7,436,000	975,000	1,711,312	3,234,365	1,255,344	775,000	1,400,000				
PROPOSED 2025 TAX LEVY OPTION 3B	1,344,425,461	117,359,389	9.6%	1.29	3.2%	17,329,081	7,957,000	975,000	1,711,312	3,556,009	1,429,760	600,000	1,100,000	\$ 45.00	\$ 542,060	\$ 521,000	
OPTION 3B TAX LEVY INCLUDES:																	
Corporate Increase of 7.0%, 521K																	
Police and Fire Pension Contributions at State Minimum Required plus additional \$360,000 to Police and \$180,000 to Fire																	
IMRF Decreased \$175,000																	
Social Security Decreased \$300,000																	
Increase Levy Amount \$542K (Corporate \$521K, Police Pension \$322K, Fire Pension \$174K, IMRF \$(175)K, and Social Security \$(300)K from Tax Year 2024 and Lowers Rate to 1.29 from 2024 Rate of 1.37.																	
Tax -Rate Village of Mundelein				0.792													
Tax -Rate Mundelein - All Pensions				0.497													
Total Tax Rate			DECREASE ----->	1.29													
% for Pensions				38.6%													
% for Police/Fire Pensions				28.8%													

VILLAGE OF MUNDELEIN

2025 PROPOSED TAX LEVY OPTION 4B

OPTION 4B															Impact to \$300,000 Homeowner		Corporate \$
	EAV	EAV Change	EAV % Change	Tax Rate	% Increase in Levy	Total Levy	Corporate	Bonds	Road & Bridge	Police Pension	Fire Pension	IMRF	Social Security	Tax Bill	Levy \$ Increase	Increase	
Tax 2024	1,227,066,072	114,776,709	10.3%	1.37	4.6%	16,787,021	7,436,000	975,000	1,711,312	3,234,365	1,255,344	775,000	1,400,000				
PROPOSED 2025 TAX LEVY OPTION 4B	1,344,425,461	117,359,389	9.6%	1.33	6.8%	17,923,081	8,551,000	975,000	1,711,312	3,556,009	1,429,760	600,000	1,100,000	\$ 93.00	\$ 1,136,060	\$ 1,115,000	
OPTION 4B TAX LEVY INCLUDES:																	
	Corporate Increase of 15.0%, 1,115K																
	Police and Fire Pension Contributions at State Minimum Required plus additional \$360,000 to Police and \$180,000 to Fire																
	IMRF Decreased \$175,000																
	Social Security Decreased \$300,000																
	Increase Levy Amount \$1,136K (Corporate \$1,115K, Police Pension \$322K, Fire Pension \$174K, IMRF \$(175)K, and Social Security \$(300)K from Tax Year 2024 and Lowers Rate to 1.33 from 2024 Rate of 1.37.																
Tax -Rate Village of Mundelein				0.836													
Tax -Rate Mundelein - All Pensions				0.497													
Total Tax Rate		DECREASE ----->		1.33													
% for Pensions				37.3%													
% for Police/Fire Pensions				27.8%													



Comments / Questions